

# City Centre Map

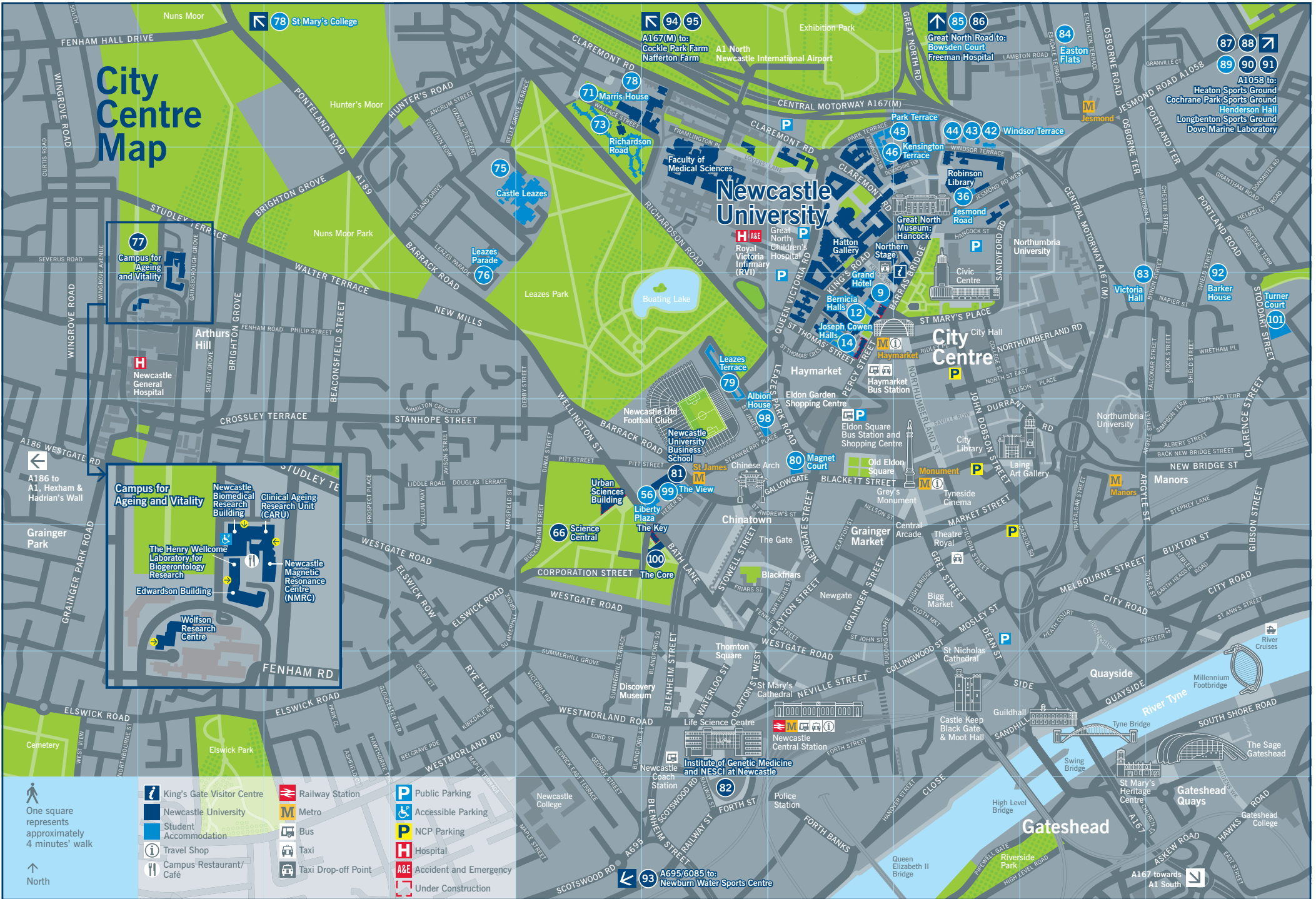
**Campus for Ageing and Vitality**

- Newcastle Biomedical Research Building
- Clinical Ageing Research Unit (CARU)
- The Henry Wellcome Laboratory for Biogerontology Research
- Newcastle Magnetic Resonance Centre (NMRC)
- Edwardson Building
- Wolfsan Research Centre

One square represents approximately 4 minutes' walk

↑ North

- |  |                            |  |                     |  |                        |
|--|----------------------------|--|---------------------|--|------------------------|
|  | King's Gate Visitor Centre |  | Railway Station     |  | Public Parking         |
|  | Newcastle University       |  | Metro               |  | Accessible Parking     |
|  | Student Accommodation      |  | Bus                 |  | NCP Parking            |
|  | Travel Shop                |  | Taxi                |  | Hospital               |
|  | Campus Restaurant/Café     |  | Taxi Drop-off Point |  | Accident and Emergency |
|  |                            |  | Under Construction  |  |                        |

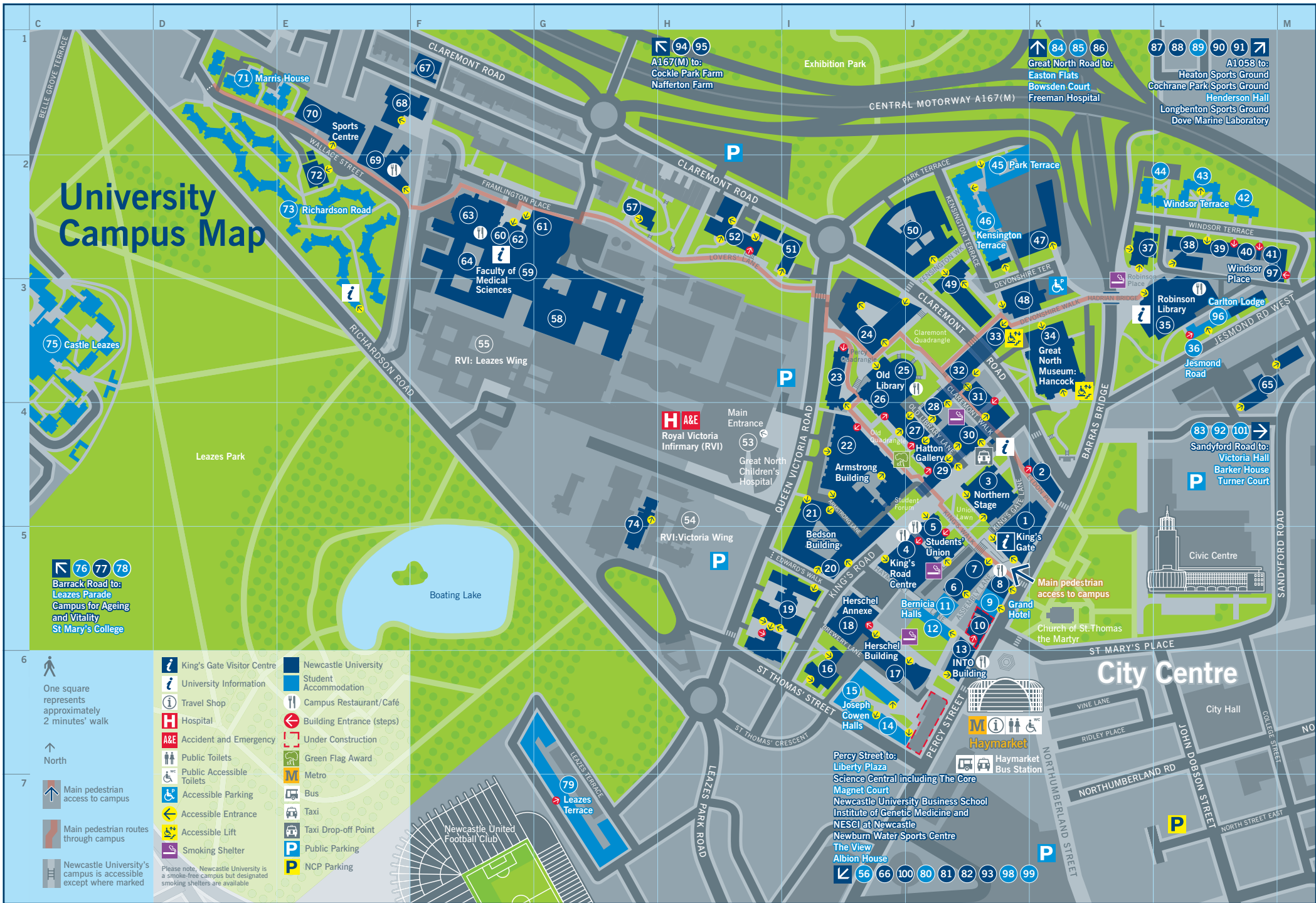


Newcastle University

City Centre

Gateshead

# University Campus Map



Barrack Road to:  
 Leazes Parade  
 Campus for Ageing  
 and Vitality  
 St Mary's College

One square  
 represents  
 approximately  
 2 minutes' walk  
  

 North

Main pedestrian  
 access to campus  
  

 Main pedestrian routes  
 through campus  
  

 Newcastle University's  
 campus is accessible  
 except where marked

- |                            |                           |
|----------------------------|---------------------------|
| King's Gate Visitor Centre | Newcastle University      |
| University Information     | Student Accommodation     |
| Travel Shop                | Campus Restaurant/Café    |
| Hospital                   | Building Entrance (steps) |
| Accident and Emergency     | Under Construction        |
| Public Toilets             | Green Flag Award          |
| Public Accessible Toilets  | Metro                     |
| Accessible Parking         | Bus                       |
| Accessible Entrance        | Taxi                      |
| Accessible Lift            | Taxi Drop-off Point       |
| Smoking Shelter            | Public Parking            |
|                            | NCP Parking               |

Please note, Newcastle University is a smoke-free campus but designated smoking shelters are available

Percy Street to:  
 Liberty Plaza  
 Science Central including The Core  
 Magnet Court  
 Newcastle University Business School  
 Institute of Genetic Medicine and  
 NESCI at Newcastle  
 Newburn Water Sports Centre  
 The View  
 Albion House



## Numerical Key of Buildings/Services

1 King's Gate	22 Armstrong Building	48 Devonshire Building	77 Campus for Ageing and Vitality
1 Student Services: Accommodation Service; Careers Service; Development and Alumni Relations Office; Finance Office; Health and Wellbeing; International Office	22 King's Hall	49 Cassie Building	78 St Mary's College
2 Barras/Claremont/Eldon Buildings	22 Robert Boyle Lecture Theatre	50 Stephenson Building	79 Leazes Terrace
2 Security Control Centre	23 Percy Building	51 Ridley Building 1	80 Magnet Court
3 Northern Stage	24 Merz Court	52 Ridley Building 2	81 Newcastle University Business School
4 King's Road Centre and Bistro	25 Beehive, Research	53 – 55 Royal Victoria Infirmary (RVI)	82 Institute of Genetic Medicine and NESCI at Newcastle
5 Students' Union	25 Courtyard Restaurant	56 Liberty Plaza	83 Victoria Hall
6 The Music Studios	25, 26 Old Library Building	57 Wolfson Building	84 Easton Flats
7 Culture Lab	25, 26 IT Service Desk	58 William Leech Building	85 Bowsden Court
8 Campus Coffee	26 Language Resource Centre	59 Catherine Cookson Building	86 Freeman Hospital
9 Grand Hotel	27 Architecture Building	60 Medical School	87 Heaton Sports Ground
10 Under construction	28 Building Science	60 Walton Library	88 Cochrane Park Sports Ground
11, 12 Bernicia Halls	29 Hatton Gallery: Great North Museum	61 Henry Wellcome Building	89 Henderson Hall
13 The INTO Building	29, 30 King Edward VII Building	62 David Shaw Lecture Theatre	90 Longbenton Sports Ground
14, 15 Joseph Cowen Halls	31 Daysh Building	63 School of Dental Sciences	91 Dove Marine Laboratory
16 Agriculture Building	32 Claremont Tower	64 Dental Hospital	92 Barker House
16 Estate Support Service	33 Claremont Bridge	65 Marjorie Robinson Library Rooms – due to open early 2016	93 Newburn Water Sports Centre
17 Curtis Auditorium	34 Great North Museum: Hancock	66 Science Central	94 Cockle Park Farm
17 Herschel Building	35 Robinson Library	67 Claremont Terrace (1 – 4)	95 Nafferton Farm
18 Herschel Annex	36 Jesmond Road	68 Paul O'Gorman Building	96 Carlton Lodge Accommodation
19 King George VI Building	37 Politics Building	69 Baddiley-Clark Building	97 Windsor Place Accommodation
19 Staff Development Unit	38 Newcastle Law School	70 Sports Centre	98 Albion House
20, 21 Bedson Building	38 – 41 Windsor Terrace	71 Marris House	99 The View
21 Barbara Strang Teaching Centre	39 Chaplaincy	72 Squash Courts	100 The Core (Newcastle University Centre for Professional and Executive Development)
21 Side Cluster	42 – 44 Windsor Terrace	73 Richardson Road	101 Turner Court
	45 Park Terrace	74 Sir James Spence Institute	
	46 Kensington Terrace	75 Castle Leazes	
	47 Drummond Building	76 Leazes Parade	




## A–Z List of Buildings/Services

<b>A</b>		<b>D</b>		<b>K</b>		<b>R</b>	
Accommodation Service (J5)	1	David Shaw Lecture Theatre (F2)	62	Kensington Terrace (J2)	46	Richardson Road (D1/E2)	73
Admissions Office (J5)	1	Daysh Building (J3)	31	King Edward VII Building (I3)	29, 30	Ridley Building 1 (H2)	51
Agriculture Building (I6)	16	Dental Hospital (F2)	64	King George VI Building (H5)	19	Ridley Building 2 (H2)	52
Albion House	98	Dental Sciences, School of (F2)	63	King's Gate (J5)	1	Robert Boyle Lecture Theatre (I4)	22
Architecture Building (J4)	27	Development and Alumni Relations Office (J5)	1	King's Hall (I4)	22	Robinson Library (L3)	35
Armstrong Building (I4)	22	Devonshire Building (J3)	48	King's Road Centre (J5)	4	Royal Victoria Infirmary (RVI)	53 – 55
<b>B</b>		Drummond Building (K2)		47	<b>L</b>		
Baddiley-Clark Building (E2)	69	<b>E</b>		Language Resource Centre (I3)	26	<b>S</b>	
Barbara Strang Teaching Centre	21	Estate Support Service (I6)	16	Law School (L2)	38	Science Central	66
Barras/Claremont/Eldon Buildings (K4)	2	Executive Office (J5)	1	Leazes Parade (B5)	76	Security Control Centre (K4)	2
Bedson Building (I4/I5)	20, 21	<b>F</b>		Leazes Terrace (G7)	79	Side Cluster (I4)	21
Bernicia Halls (J5)	11, 12	Finance Office (J5)	1	Liberty Plaza	56	Sir James Spence Institute (G4)	74
Beehive, Research (I3)	25	<b>G</b>		Library, Robinson (L3)	35	Sports Centre (E1)	70
Bistro (J5)	4	Grand Hotel (J5)	9	<b>M</b>			
Building Science (J4)	28	Great North Museum: Hancock (K3)	34	Marris House (D1)	71	Squash Courts (E2)	72
<b>C</b>		<b>H</b>		Medical School (F2)	60	Staff Development Unit (H5)	19
Campus Coffee (J5)	8	Hatton Gallery: Great North Museum (J4)	29	Merz Court (I3)	24	Stephenson Building (J2)	50
Careers Service (J5)	1	Henry Wellcome Building (G2)	61	Music Studios, The (J5)	6	Student Services (J5)	1
Carlton Lodge Accommodation (L3)	96	Herschel Annex (I5)	18	<b>N</b>			
Cassie Building (J3)	49	Herschel Building (I6)	17	Newcastle Law School (L2)	38	The Core	100
Castle Leazes (C3)	75	Howden Room (H5)	19	Newcastle University	100	The View	99
Catherine Cookson Building (F2)	59	Human Resources (J5)	1	Centre for Professional and Executive Development		Turner Court	101
Chaplaincy (L2)	39	<b>I</b>		Northern Stage (J4)	3	<b>U</b>	
Claremont Bridge (J3)	33	International Office (J5)	1	<b>O</b>			
Claremont Terrace (1–4) (F1)	67	INTO Building, The (J6)	13	Old Library Building (I3)	25, 26	<b>W</b>	
Claremont Tower (J3)	32	IT Service Desk (I3)	25, 26	<b>P</b>			
Courtyard Restaurant (I3)	25	<b>J</b>		Park Terrace (J2)	45	Walton Library (F2)	60
Culture Lab (J5)	7	Jesmond Road (L3)	36	Paul O'Gorman Building (E1)	68	William Leech Building (G3)	58
Curtis Auditorium (I6)	17	Joseph Cowen Halls (I6)	14, 15	Percy Building (I3)	23	Windsor Place Accommodation (M2)	97
				Politics Building (K2)	37	Windsor Terrace (L2)	38 – 41
						Wolfson Building (G2)	57

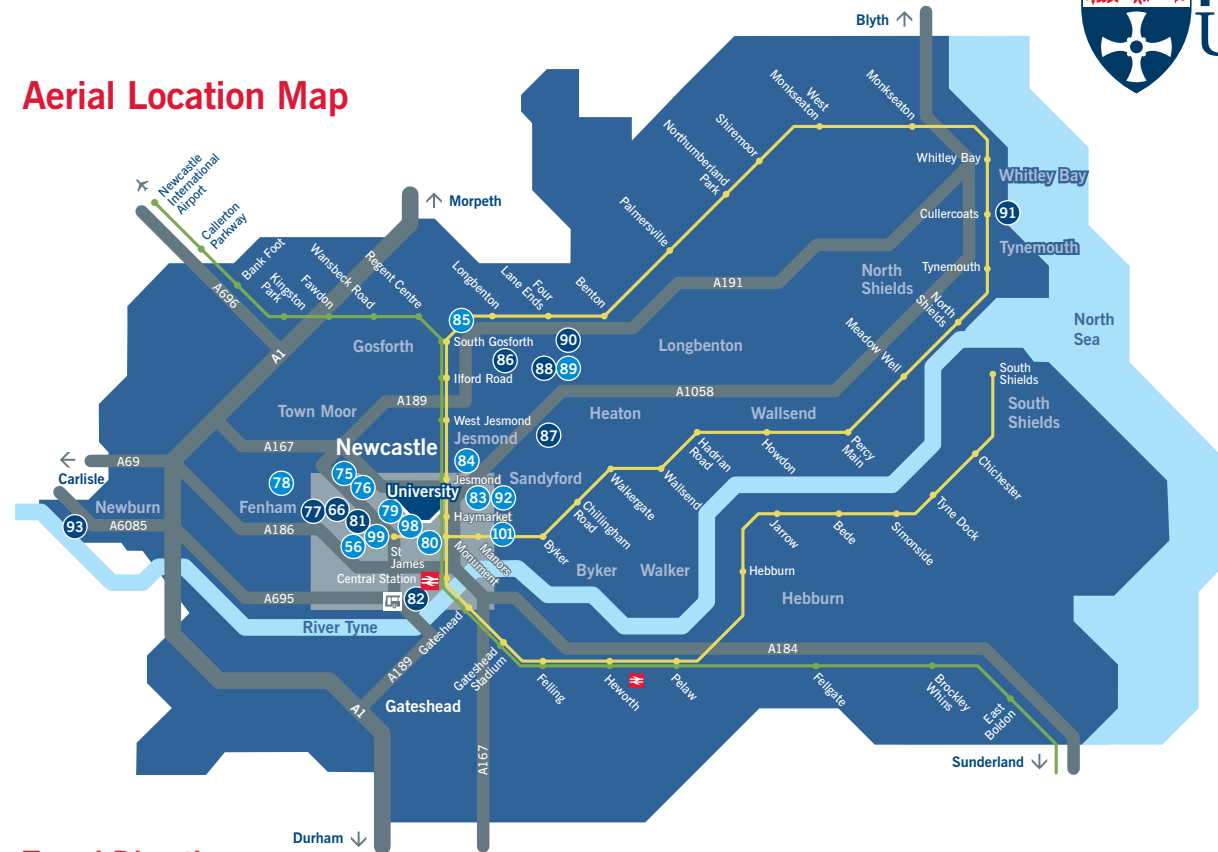
### Aerial Location Key

98	Albion House	NE1 4NF
92	Barker House	NE2 1XR
85	Bowsden Court	NE3 1RR
77	Campus for Ageing and Vitality	NE4 5PL
75	Castle Leazes	NE2 4NY
88	Cochrane Park Sports Ground	NE7 7JX
91	Dove Marine Laboratory	NE30 4PZ
84	Easton Flats	NE2 4DY
86	Freeman Hospital	NE7 7DN
87	Heaton Sports Ground	NE6 5QQ
89	Henderson Hall	NE7 7UY
82	Institute of Genetic Medicine and NESCI at Newcastle	NE1 4EP
76	Leazes Parade	NE2 4LB
79	Leazes Terrace	NE1 4LY
56	Liberty Plaza	NE4 5SA
90	Longbenton Sports Ground	NE12 8AD
80	Magnet Court	NE1 4SP
93	Newburn Water Sports Centre	NE15 8NL
18	Newcastle University Business School	NE1 4SE
66	Science Central	NE4 5TF
78	St Mary's College	NE4 9YH
99	The View	NE4 5SA
101	Turner Court	NE2 1AA
83	Victoria Hall	NE2 1XH

### Key

-  Rail Station
-  Coach Station
-  Green Metro Line (between Newcastle International Airport and Sunderland)
-  Yellow Metro Line (between South Shields and the coast)
-  City Centre
-  Newcastle University
-  Student Accommodation

## Aerial Location Map



## Travel Directions

### Road (private transport)

The University is based right in the city centre. From the north or south follow the A1 towards Newcastle. Leave the A1 (Newcastle Western Bypass) at the junction with the A167/A696 and follow signs for the 'City Centre'. From the A167 take the exit marked 'Universities, RVI and Eldon Square', which brings you on to Claremont Road. From the west follow the A69 to the junction with the A1, and then take the A1 northbound. Leave the A1 at the next junction, signposted 'City (West), Westerhope B6324'. Follow signs for the 'City Centre A167'. Leave at the exit marked 'Universities, RVI and Eldon Square', which brings you on to Claremont Road.

### Parking

Parking is limited around the University. The public car parks on Claremont Road (NE2 4AA) and Queen Victoria Road (NE1 4LP) are the closest to campus. City centre NCP car parks are located on John Dobson Street (NE1 8HL), New Bridge Street (NE1 8AB), and Carloli Square (NE1 6UF). As the city centre is a busy place to park, one option is to park at a nearby Metro station and travel to the University by Metro. Metro is a light rail system that connects passengers to Newcastle city centre, railway stations and Newcastle Airport.

### Rail

From Newcastle Central Station you can take the Metro to Haymarket Metro station.

### Bus/Coach

The city's coach and bus stations, including the Newcastle Coach Station, are within easy reach of the University by foot, taxi or Metro.

### Plane

Newcastle International Airport is only seven miles north west of Newcastle University.

A taxi from the Airport will take about 15 minutes, costing approximately £15.

You can also travel by Metro to Haymarket, which takes about 25 minutes and costs £3.40. The University is adjacent to Haymarket Metro station.

## Useful Contacts

### Newcastle University

Newcastle upon Tyne NE1 7RU  
 Student Services: 0191 208 3333  
[www.ncl.ac.uk](http://www.ncl.ac.uk)  
 Online mapping: [www.ncl.ac.uk/about/visit/maps](http://www.ncl.ac.uk/about/visit/maps)

### Campus Security

General: 0191 208 6817  
 Emergency: 0191 208 6666

### City Information

[www.newcastlegetateshead.com](http://www.newcastlegetateshead.com)

### Newcastle Coach Station

National Express: 08717 818181  
[www.nationalexpress.com](http://www.nationalexpress.com)

### National Rail Enquiries

08457 484950  
[www.nationalrail.co.uk](http://www.nationalrail.co.uk)

### Newcastle International Airport

0871 882 1121  
[www.newcastleairport.com](http://www.newcastleairport.com)

# Airport Map



### Key

-  Airports
-  Airports with directflights to Newcastle